

# ANNUAL REPORT 2014

## CELEBRATING Five Years of Strategic Giving

Community Foundation of Singapore (CFS) celebrated its fifth year in September 2013. Looking back to when CFS was formally launched – in the depths of the global financial crisis – we certainly have come a long way. When the idea of CFS was mooted, there was much apprehension as we were not sure how CFS could contribute to the charity sector.

CFS is now contributing to the charity sector in ways we could not have imagined. As of end March 2014, CFS has raised S\$58.3 million from 58 donor funds, of which S\$18.7 million is endowed. We have realised that we are meeting a gap in the charity ecosystem, and that there is a growing need for more strategic giving.

At CFS, we serve individuals, corporates as well as non-profits with our unique donor-advised funds. We work closely with our strategic charity partners to surface needs in the community and at the same time, match them with our donors' charitable intentions. Our donors have a choice to be as involved as they want to with the beneficiaries, or not at all.

CFS has also taken the lead in identifying needs that lack awareness and that are frequently not funded. We feel that such needs could not be supported by any single donor, but rather by the community. As such, we set up Community Impact Funds. To date, we have three such funds — Kampung Spirit Meals Fund, Migrants Emergency Assistance and Support Fund, and Safe Home Scheme. As we approach the new year, we are brimming with ideas and energy, and you can expect more news to come.

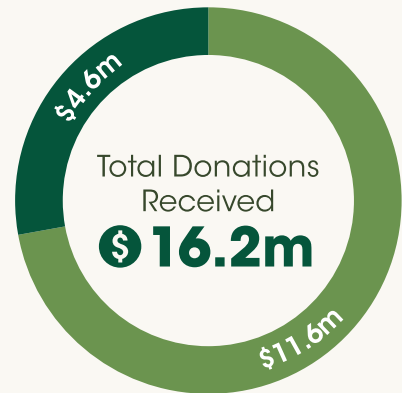
Do continue talking to us on how else we can assist you in your philanthropic journey. We thank you for your past support and look forward to more years of giving.



*Laurence Lien*

Laurence Lien, Chairman

## Key Achievements



- Endowment Fund
- Flow-Through Fund



Charities We Worked With **132**

Total Grants Given Out  
**\$7.4m**



**3%**  
Sports



**5%**  
Health



**7%**  
Arts & Heritage



**37%**  
Social & Welfare



**38%**  
Education



**10%**  
Others

The sectors are defined according to the Charity Portal. Grants given to CFS to run as programmes are reflected as "Others" because CFS is classified under Others. For Overseas grants we go by grant purpose and beneficiaries in the allocation of sectors.

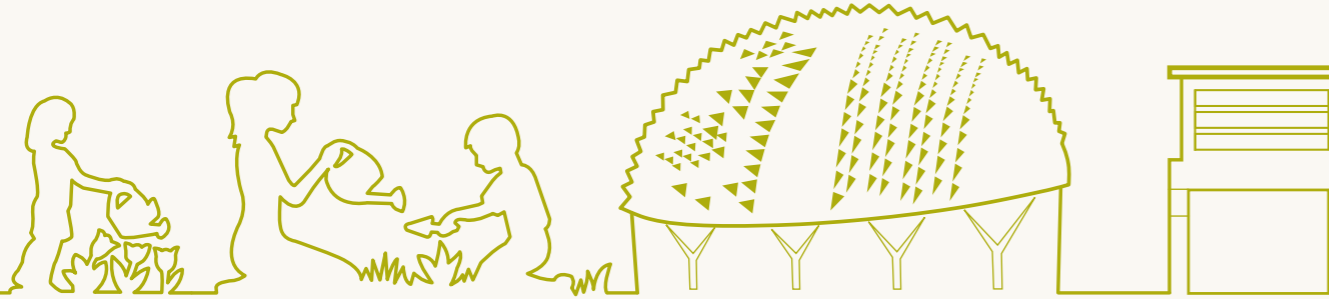
•Amounts in Singapore Dollar

•Figures are from 1 April 2013 to 31 March 2014

•Rounded up to nearest \$100,000

Community Foundation

OF SINGAPORE



## Our Community Footprint

Our community footprint has grown and most of the grants are in the area of education and social services supporting children and youths followed by the elderly. Below are highlights of three programmes funded by CFS:

### BRINGING THE ARTS & COMMUNITY TOGETHER:

Diversity in Abilities training programme



The Diversity in Abilities training programme supported by UBS was launched in 2012 as a pilot project to develop the talents of children and youths with special needs. Through the programme, local professional artists develop a training curriculum that motivates and inspires these children to discover their strengths and talents, and become achievers in their own lives and in the community. With these discoveries, the students proudly showcase and celebrate their diversity in abilities in a series of concerts.

Already in its second year, 138 students from six special education schools have benefitted from this programme.

"UBS is pleased to partner with CFS to develop the Diversity in Abilities training programme in visual and performing arts for the special needs community that culminated in an art exhibition and a theatrical production showcasing the diverse and amazing talents of the special needs youths. It has been extremely rewarding to see the transformation in the youths where they are empowered and given the opportunity to excel."

**Leona Tan, UBS AG**

### SERVING THE LOCAL COMMUNITY:

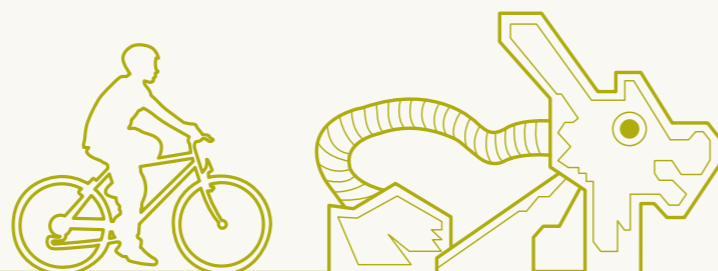
Kampung Spirit Fund programme

The Kampung Spirit Fund programme, one of the programmes started by CFS in 2013, is a community project that supports needy residents in a housing estate with vouchers that can be exchanged for meals of their choice at participating food stalls in their neighbourhood. The programme encourages the kampung to be part of the solution. It is funded by a donor who resides in the Ghim Moh neighbourhood, while hawkers in the area co-sponsor the meals. The freedom of choice that the residents have in choosing their meals is a simple yet empowering act.

The pilot programme currently supports more than 60 needy residents with an average of 1,000 meals served in a month.



Photo Courtesy of The Lien Foundation



### USING SPORTS TO CHANGE LIVES:

Saturday Night Lights programme



Photo Courtesy of Sport Singapore

Started by SportCares Foundation, which was set up by Sport Singapore, the Saturday Night Lights programme runs from 7pm to 11pm where certified coaches teach football to low-income and at-risk youths from different communities in Singapore. They coach, mentor and teach these youths important life lessons such as discipline, commitment, respect, resilience and teamwork. Transport is chartered so the youths can get to and from the field, and meals are provided. Saturday Night Lights programme, which was formally launched in 2013, has grown to four locations islandwide, reaching out to as many as 360 youths supported by charitable and grassroots organisations.

Most recently, SportCares Foundation has developed programmes in other sports such as tennis (Love Singapore!), dragon boating (Water Dragons) and running (CareRunners). Currently in development is the Travelling Hoops basketball programme. The SportCares' youths are also taking on volunteer roles at events by Sport Singapore and the community.

"Sport Singapore started the SportCares Foundation with CFS because we were new to philanthropy. We saw the organisation as a prudent platform to launch our objectives of using sport for social inclusion, community bridging and personal empowerment. We have remained clients of CFS because their team provides us with the administrative ease for the grantmaking work and they continue to share their expertise in the charitable sector with us. Their support provides our donors with the comfort and assurance that their financial donations are used to maximise community impact through the regular reporting process. Our Saturday Night Lights programme would not have been able to broaden its community reach and deepen its impact as fast as it did without the support of CFS."

**Laura Reid, SportCares Foundation**

## What We Do

Community Foundation of Singapore (CFS) connects you to innovative and impactful programmes based on your philanthropic intent. We address the gaps in our community through our grantmaking process and offer you insights to community needs to ensure your charitable giving goes where it is needed the most.

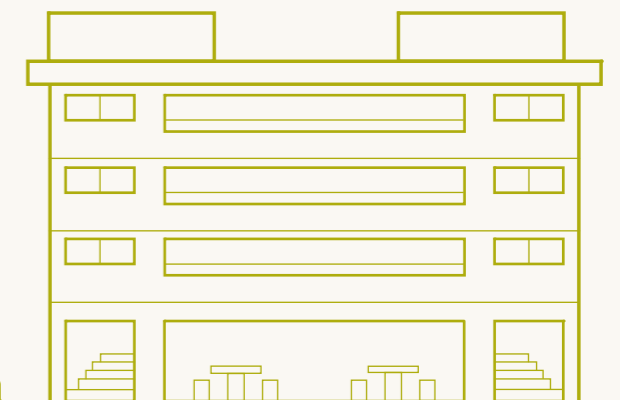
You can choose between setting up an endowment fund or flow-through fund to best suit your giving. Each donor-advised fund under CFS is named and managed separately. Every six months, you will receive a statement with details of your fund. Every grant that goes out of your fund is accompanied by a grant recommendation form, which is signed by you.

### OUR CORPORATE GOVERNANCE

CFS is a charity with an Institution of Public Character (IPC) status and we are partly funded by the Ministry of Culture, Community and Youth (MCCY). CFS's operational grantmaking standards are rigorous, and are in compliance with the Code of Governance established by the Commissioner of Charities Singapore. Under CFS, there are independent committees chaired by experts in their fields.

### OUR RESERVES POLICY

Our reserves comprise of general, restricted and endowment funds. Disbursement and usage of restricted funds are for charitable purposes specified by donors, while donations in endowment funds are kept as capital and only the distributable income can be used for charitable purposes.



# Spreading the Idea of Philanthropy

Over the past year, Community Foundation of Singapore (CFS) has worked with many people embarking on their philanthropic journeys. Professionals, entrepreneurs, retirees, families, corporations and associations have set up funds with us, with the common goal of channelling their donations to support the causes they are passionate in and to help those in need.

CFS started The Funding Network (TFN) early this year to engage donors in a crowdsourcing format, with the objectives of introducing philanthropy to a larger crowd and to highlight lesser known causes worth supporting in Singapore. At the first event, we raised over S\$30,000 for Drama Box, Dignity Kitchen and a food distribution programme initiated by NUS Society.

CFS conducted Learning Journeys to charities and organised talks by practitioners working in various charitable organisations so they could share their knowledge with donors. This has helped our donors to get a better picture of the charitable landscape and how their donations can be effectively channelled to those in need.



As we look ahead to the next five years, we hope to be in the forefront of innovation in philanthropy, including legacy giving and term endowment opportunities. We want to encourage deeper collaborations between the public, private and social sectors. We need a collaborative approach to solve the issues on the ground. There is much to be done and we hope you will come onboard with us so together we can make an impact in our community.

*Catherine Loh*

**Catherine Loh, Chief Executive Officer**

## Board of Directors

Name	Designation	Date of Appointment
Mr Laurence Lien	Chairman, Board of Directors Chair, Programmes & Grants Committee Member, Human Resource & Finance Committee Member, Nomination Committee	31 October 2008
Dr Mary Ann Tsao	Member, Investment Committee Member, Programmes & Grants Committee Member, Nomination Committee	8 September 2008
Mr Yeoh Oon Jin	Chair, Audit Committee	19 May 2009
Ms Madeleine Lee	Chair, Investment Committee Chair, Human Resource & Finance Committee	8 September 2009
Ms Elsie Foh	Chair, Donor Relations Committee	11 March 2010
Mr Keith Chua	Chair, Nomination Committee Member, Donor Relations Committee	20 April 2011
Mr Adrian Peh	Member, Donor Relations Committee	26 August 2011
Mrs Mildred Tan		29 April 2014
Mrs Stefanie Yuen Thio		10 June 2014

6 Eu Tong Sen Street #04-88 The Central Singapore 059817

Tel: +65 6550 9529 Email: [contactus@cf.org.sg](mailto:contactus@cf.org.sg) Website: [www.cf.org.sg](http://www.cf.org.sg) UEN: 200817758M

Community Foundation

OF SINGAPORE